



Map of the Alumni Center

Like Share 0

- HOME
- MEMBERSHIP
- ALUMNI CENTER
- PROGRAMS & EVENTS
- K-STATE STUDENTS
- ATHLETICS
- CAREER SERVICES
- WAYS TO GIVE
- SHOP / SERVICES
- LICENSE PLATES
- WILDCAT FUN ZONE

Login

Why should I log in?

My Community



Current Conditions:
Fair, 71 F

[Manhattan Forecast](#)

[Kansas State University](#)

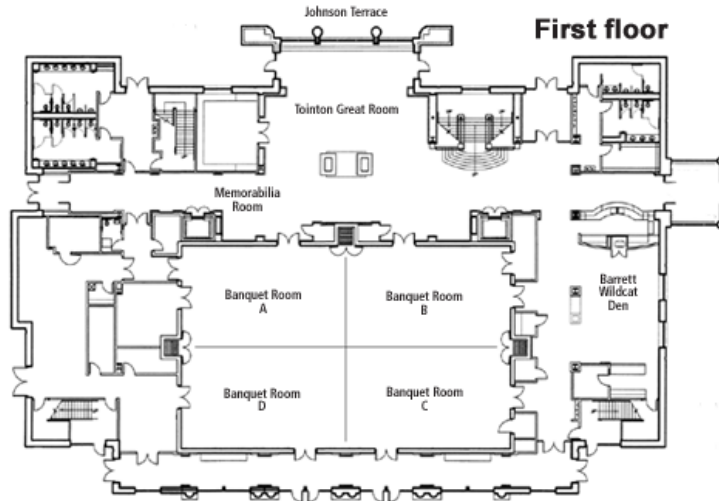
[K-State Athletics](#)

[KSU Foundation](#)

[Related Links](#)

Floor Plans

Following is a rendering of each of the three floors of the Alumni Center. Room names are indicated on the maps. For information on room rates, [click here](#).

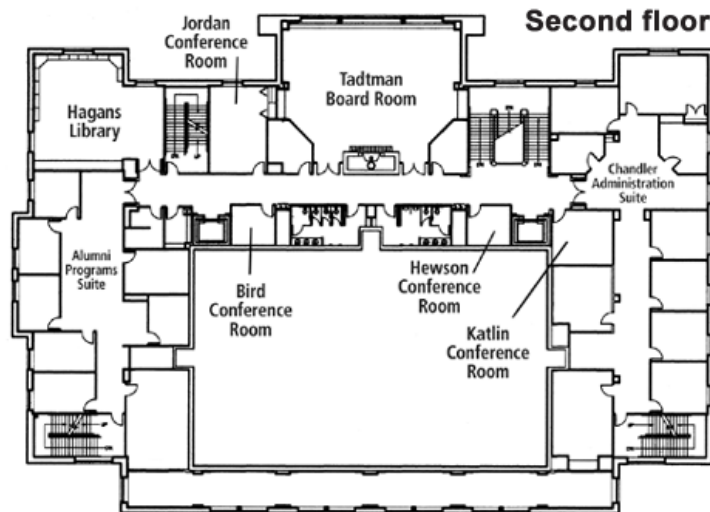


FIRST FLOOR

The **Tointon Great Room** is an open, comfortable seating area, highlighted by the Frasier family limestone fireplace. Ideal for a casual greeting or waiting area or reception before an event in the Banquet Room. The **Banquet Room** can accommodate up to 750 people for a reception, or 400 people with round tables of eight guests per table. The room also can be divided into four quadrants, for more intimate gatherings.

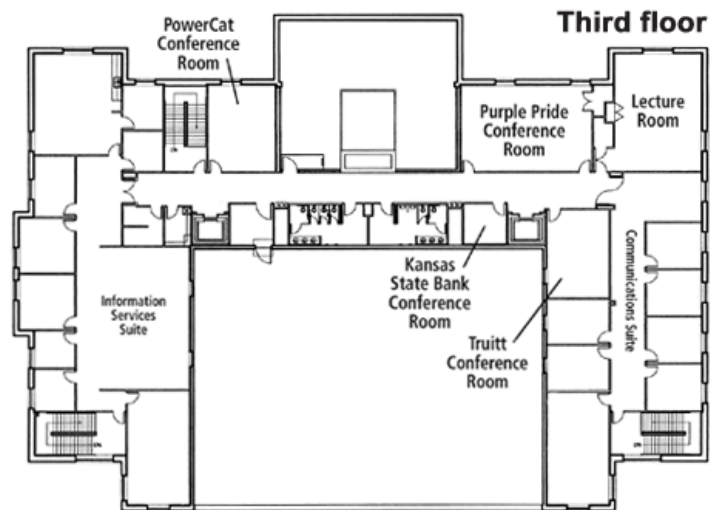
The **Barrett Wildcat Den** is a casual, open seating area including a large-screen television and the Schuler saltwater reef aquarium. The Den is ideal as a reception space for events taking place in the Banquet Room or for a luncheon.

Johnson Terrace may be used for reception space and other social gatherings.



SECOND FLOOR

The **Tadtman Board Room** overlooks Memorial Stadium and can accommodate 40 people in board room-style seating or 72 in dinner-style seating. Four additional conference rooms are available on the second floor: **Jordan** seats 12 people, **Bird** and **Hewson** each seat four people, and **Katlin** seats eight people.



THIRD FLOOR

The third floor features two specialty conference rooms. The [Purple Pride Room](#) can be set up in a variety of styles to accommodate 15-50 people, and the [Lecture Room](#) is set up with permanent theater-style seating with data and telephone capabilities for 30 people. In addition, [PowerCat](#) and [Truitt](#) rooms will seat 12 people and the [Kansas State Bank Room](#) will seat four.

For more information about renting the K-State Alumni Center, contact Lauren Chard, Alumni Center manager, at LChard@K-State.com, 800-600-ALUM (2586) or 785-532-5071.

Home

About Us

[Alumni Association Staff](#)
[Who to Contact](#)
[Alumni Association Board of Directors](#)
[K-State Alumni Association's FY 2016-2020 Strategic Plan](#)
[Alumni Association History](#)
[Annual Reports](#)
[Email the Alumni Association](#)

Membership

[Join or Renew](#)
[Benefits/Services](#)
[K-Stater Magazine](#)
[Update Your Info](#)
[Life Member Listing](#)
[Request Replacement Card/Decal](#)

Programs & Events

[Awards](#)
[Calendar](#)
[Clubs](#)
[Future K-Staters](#)
[Born to be a Wildcat](#)
[Junior Wildcats Club](#)
[For Sophomores Only](#)
[Just for Juniors](#)
[Scholarships](#)
[Homecoming](#)
[International](#)
[K-State Students](#)
[Multicultural](#)
[Reunions](#)
[Traveling Wildcats](#)
[Wabash CannonBall Kansas City](#)
[Wabash CannonBall Colorado](#)
[Wabash CannonBall Houston](#)
[Wildcats for Higher Education](#)

Alumni Center

[About the Center](#)
[Map of the Alumni Center](#)
[Rent the Alumni Center](#)
[Fundraising Opportunities](#)

K-State Students

[Wildcats Forever](#)
[Student Alumni Board](#)
[Homecoming](#)
[Student Ambassadors](#)
[Grad Bash/Grad Breakfast](#)
[Multicultural](#)
[International](#)
[Scholarships](#)

Athletics

[Ultimate Football Guide](#)
[Junior Wildcats Club](#)
[Official Athletics Site](#)
[Compliance Information](#)

Career Services

[About K-State Alumni Career Services](#)
[Available Career Services](#)
[Career Consultations](#)
[Online Services](#)
[FAQs](#)

Wildcat Fun Zone

[K-State Downloads](#)
[K-State Traditions](#)

Ways to Give

[Make a Gift](#)
[Alumni Center Pavers](#)
[Donor Recognition](#)
[Scholarships](#)
[Tradition Founders](#)
[Volunteer](#)
[Board of Directors](#)

Shop / Services

[K-State Ring](#)
[Powercat Visa](#)
[Retire to the Flint Hills](#)
[Insurance](#)
[KansasStateCars.com](#)
[Holiday Ornaments](#)
[K-State 150th Ornament](#)

K-State Alumni Association

1720 Alumni Center, Manhattan, KS 66506-6600 | 800-600-ALUM (2586) | 785-532-6260
Alumni@K-State.com | www.K-State.com | [Find us on Facebook](#) | [Follow us on Twitter](#)